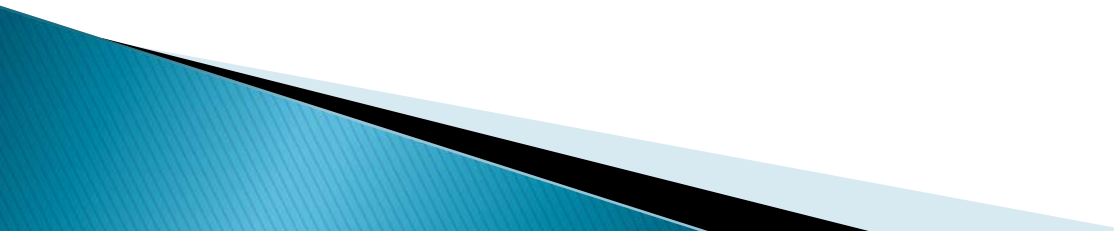
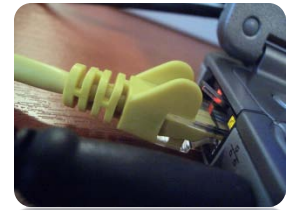


Welcome to the Net

Unit Overview

- ▶ The Internet
 - ▶ The World Wide Web
 - ▶ Networks – 2 Types
 - ▶ Server Client Relationship
 - ▶ How the file gets to your computer
 - ▶ Web & IP Addresses
 - ▶ Search Engines
 - ▶ Search Criteria
 - ▶ Web site Evaluation
- 

What is the internet?



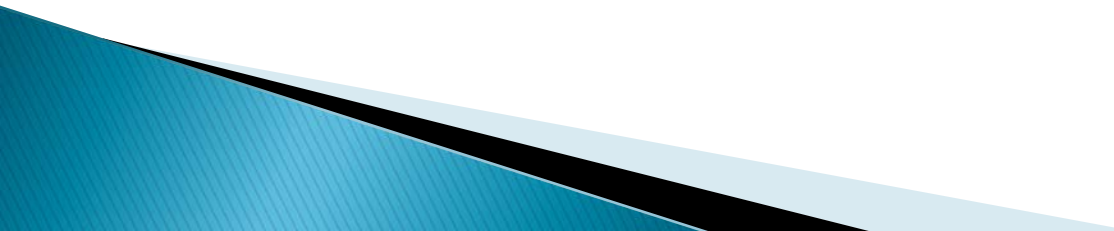
- ▶ The **Internet** is a worldwide collection of networks that link millions of computers. It is the physical network that allows connected computers to share data, such as web pages, and devices such as printers.

What is the world wide web?

- ▶ It is **not** the internet!
- ▶ It is a service of the internet.
- ▶ It is a worldwide collection of web pages that are linked over the internet.
- ▶ Think of the World Wide web as the most common type of data that is send along the hardware of the internet.



Network?

- ▶ It is the combination of hardware and software that allow connected computers to share data or devices such as printers.
 - ▶ A network needs a minimum of 2 or more connected computers that can communicate with each other
- 

What are the 2 types of networks?

- ▶ LAN – Local Area Network
 - A network of connected computers and other devices at a single location. (A School)
- ▶ WAN – Wide Area Network
 - A network of connected computers and other devices that are spread out over a large geographic location (The Internet)

Servers and Clients

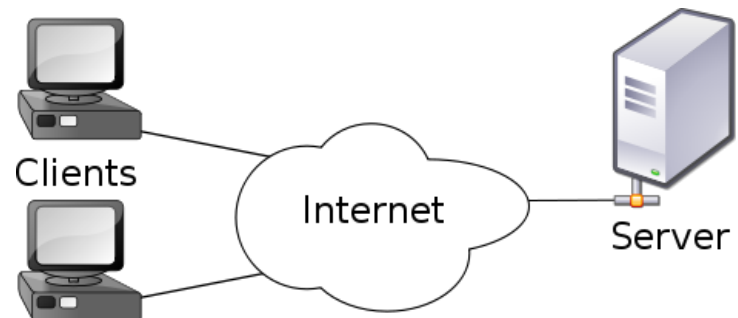
- ▶ Most networks are made up of two types of computers that communicate with each other.

1. Servers

- A powerful central computer. Responds to requests from individual computers (Clients).

2. Clients

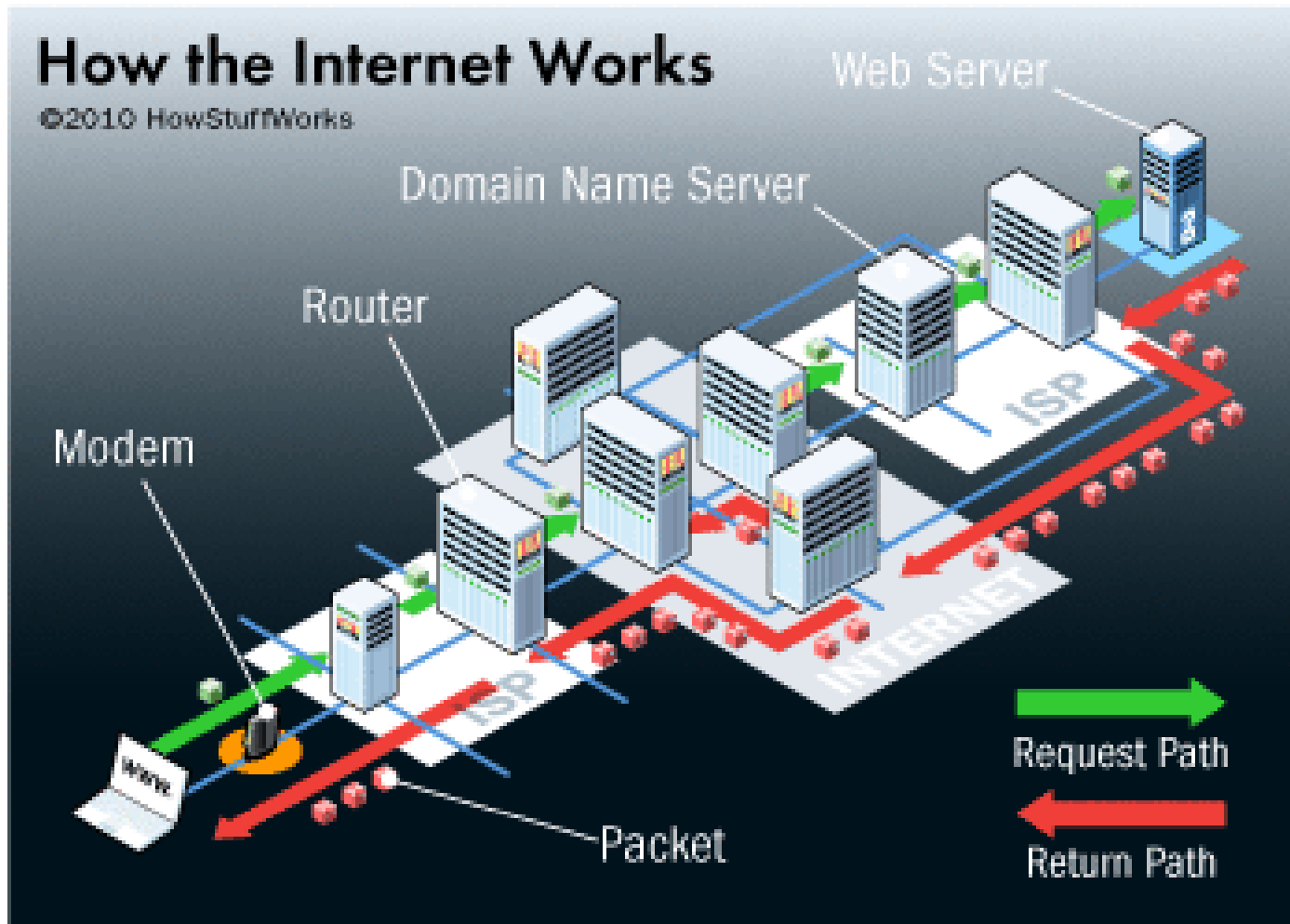
- An individual computer on the network. It sends requests to the server. Requests are usually for access to a file or program.



Internet

- ▶ **ISP (internet Service Provider)**
 - An ISP is a company that allows you to access, use, or participate in the Internet.
- ▶ **DNS (Domain Name Server)**
 - DNS is a special server on the Internet that keeps track of where websites are located on the Internet. **Its like a phone book for the Internet.**

Putting it Together



IP Address

- ▶ Each individual computer on a network has an IP address.
- ▶ An IP Address looks like this – 164.124.101.2
- ▶ The IP address is like your house address.
- ▶ To find your computer's IP Address:
 - Right click Start
 - Run
 - Type: "ipconfig"
 - Look for "IPv4 Address"

Web Addresses

- ▶ A web page has a unique address, called a URL or Web Address

`http://www.pizza.com/about.html`

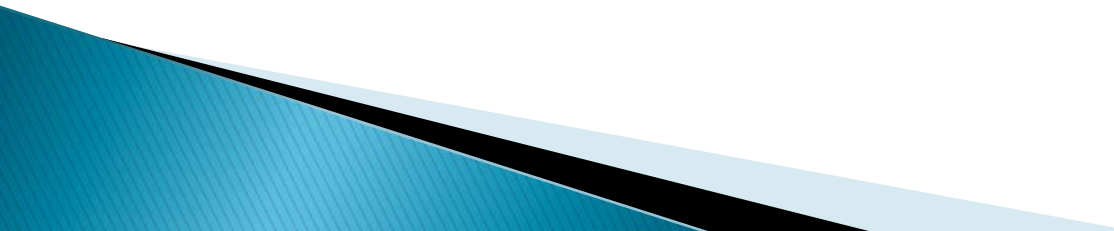


The URL `http://www.pizza.com/about.html` is broken down into four numbered parts, each indicated by a blue bracket underneath:

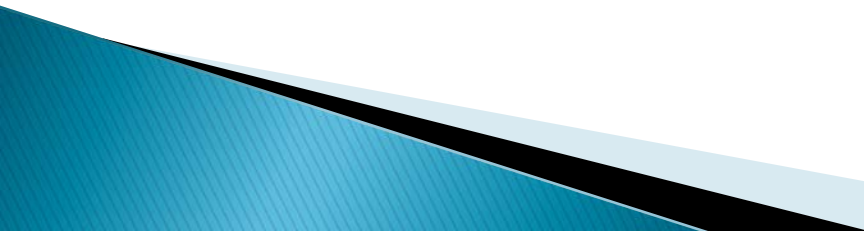
- 1: `http://`
- 2: `www.pizza.com`
- 3: `.`
- 4: `about.html`

1. The rules that control how the web server and the browser communicate
2. Name of a server listening to messages using the http
3. is the domain name where the web server is located. The .com part is referred to as the top level domain
4. the name of HTML file requested

Domains

- ▶ .com – commercial
 - ▶ .gov – government
 - ▶ .org – organization
 - ▶ .edu – education
 - ▶ .co – country
- 

What is a search engine?

- ▶ Programs and sites on the World Wide Web that allow you to search other sites for information
 - ▶ 3 kinds
 - Robots (called crawlers; ants or spiders)
 - Human Powered
 - Hybrid
- 

What search engines do you know?

- ▶ Google
 - ▶ Bing
 - ▶ Yahoo
 - ▶ Altavista
 - ▶ Ask
 - ▶ Dogpile
 - ▶ Daum
 - ▶ Naver
- 

Search Criteria

- ▶ The words that you type in the search box
- ▶ “” → exact words
 - “I love Pizza”
- ▶ + → include words
 - Pizza +Love
- ▶ - → exclude unwanted words
 - Pizza -hate

Search Criteria

- ▶ The words that you type in the search box
- ▶ **AND** → include words
 - Pizza AND Love
- ▶ **OR** → one word or both
 - Pizza OR Love
- ▶ **NOT** → exclude unwanted words
 - Pizza NOT hate

Website Evaluation

- ▶ Purpose
 - ▶ Authority
 - ▶ Objectivity
 - ▶ Appropriateness
 - ▶ Currency
 - ▶ Responsibility
 - ▶ Clarity
 - ▶ Accessibility
- 